



150 route de Ferney, P.O. Box 2100
1211 Geneva 2, Switzerland

Tel: 41 22 791 6033 Fax: 41 22 791 6506
e-mail: act@act-intl.org

Coordinating Office

Appeal

Ethiopia

Relief & Food Security Assistance – AFET51 Appeal Target: US\$ 4,900,572

Geneva, 19 August 2005

Dear Colleagues,

ACT member and implementing partner, the **Ethiopian Evangelical Church Mekane Yesus –Development and Social Services Commission (EECMY DASSC)** is planning to address the deteriorating food crisis affecting 8 - 10 million people at risk of malnutrition. The LWF/DWS Ethiopia program will informally support this Appeal and its implementation. Severe drought conditions, a late start to the Ethiopian government's National Productive Safety Net Program to provide multi-year support to more than five million chronically food-insecure people, and inadequate resources to provide food and non-food assistance to 3.8 million food-insecure people, have combined to create an alarming situation.

While The Productive Safety Net Program is an important step, continued response to emergency conditions is critical to ensure the success of more development oriented programs. The program, which was meant to begin in January 2005, did not start until March in most areas of the country. Essentially, people targeted under the program have, in most cases, yet to receive the planned assistance and are now facing deteriorating health conditions. Women and children are especially vulnerable. Many of the chronically food-insecure people are now facing acute conditions.

Current figures indicate that 64% of food needs are pledged and only 22% of non-food needs. It must be noted, however, that this includes an unassured WFP pledge. With the number of people requiring assistance on the rise, the level of resources required is certain to increase significantly.

This Appeal includes food, non-food, and financial support to address current food shortage for six months (September 2005-February 2006) with an additional two months running costs for reporting, consolidation and rehabilitation inputs.

ACT is a global alliance of churches and related agencies working to save lives and support communities in emergencies worldwide. The ACT Coordinating Office is based with the World Council of Churches (WCC) and The Lutheran World Federation (LWF) in Switzerland.

Project Completion Date: 30 April 2006**Summary of Appeal Targets, Pledges/Contributions Received and Balance Requested**

	<u>US\$</u>
Total Appeal Target(s)	4,890,572
ACT Co-ordination / Communications	<u>10,000</u>
<u>Less:</u> Pledges/Contr. Recd.	4,900,572
Balance Requested from ACT Alliance	

White Rakuba

Director, ACT Co-ordinating Office

ABBREVIATIONS

ACT	Action by Churches Together
EECMY DASSC	Ethiopian Evangelical Church Mekane Yesus Development and Social Services Commission
CRS	Catholic Relief Services
DPPB	Disaster Prevention and Preparedness Beauru
DPPC	Disaster Prevention and Preparedness Commission
EGBS	East Gembella Bethel Synod
FSCB	Food Security Co-ordination Beauru
FS/DPPC	Food Security/ Disaster Prevention & Preparedness Commission
GAM	Global Acute Malnutrition
HH	House Hold
JRC	Joint Relief Committee
LWF/DWS/ET	Lutheran World Federation Department for World Service Ethiopia
MT	Metric Tone
NCES	North Central Ethiopia Synod
NGOs	Non governmental Organisations
PAs	Peasant Associations
PSNP	Productive Safety Net Programme
Qt	Quintal/100kg/
SCES	South Central Ethiopia Synod
SCS	South Central Synod
SES	South Ethiopia Synod
SNNPR	Southern Nations, Nationalities and Peoples' Region
SWCP	Soil and Water Conservation Programme
SWS	South West Synod
WBS	Wabe Batu Synod
WGBS	West Gembella Bethel Synod

I. REQUESTING ACT MEMBER

- Ethiopian Evangelical Church Mekane Yesus Social and Development Commission (EECMY -DASSC)

II. IMPLEMENTING ACT MEMBER & PARTNER INFORMATION

The Ethiopian Evangelical Church Mekane Yesus/EECMY, with strong support from the Lutheran World Federation members, the government and other stakeholders, has been providing emergency relief in various parts of Ethiopia since 1980. During 2004 EECMY provided relief in 10 districts of the four regions in Ethiopia, supported by the USAID through the Catholic Relief Services of Ethiopia Office. The operation assisted a total of 491,900 people and was completed at the end of December 2004. The EECMY DASSC has just concluded the implementation of ACT Appeal AFET-41.

The EECMY- DASSC works through the following EECMY local units that play the major implementing role. (Please refer to Annex 1 of this document for the organogram of EECMY- DASSC)

North Central Ethiopia Synod/NCES

The North Central Ethiopia Synod is a unit of the EECMY based in Dessie. This Synod has been involved in emergency programmes for the past 20 years and is responsible for implementation of emergency programmes both in Amhara and Afar Regional States. In this Appeal, the NCES will implement the operations in Chifra and Mille Districts of Afar Region.

East and West Gambella Synods/EGBS/WGBS

East and West Gambella Bethel Synods are based in Gambella. In this Appeal, the East Gambella Bethel Synod will implement the operation in Gillo District and the West Gameblla Bethel Synod will implement in Akobo District. As these Synods have only been established recently established DASSC Central Relief office will give them technical support during the implementation.

South West Synod/SWS

South West Synod is one of the EECMY units with comprehensive experience in implementing various development and emergency programs. The Synod office is situated in Arbaminch town and has adequate capacity to implement in Daramalo and Gofazuria Districts of Gamo Gofa Zone of SNNP Regional State.

South Ethiopia Synod/SES/

South Ethiopia Synod has experience in emergency relief. The Synod office is situated in Hageremariam town, about 500kms south of Addis Ababa. In this Appeal, the Synod will implement the operations in Teltelle District of Borena and Liben District of Guji zone in Oromiya Regional State.

South Central Ethiopia Synod/SCES

South Central Synod is one of the Synods with long term experience in implementing emergency relief programs in the EECMY areas of work. The Synod office is located in Awassa, the Regional town of SNNP Regional State. The Synod will be responsible for the implementation of emergency relief and rehabilitation in Aletawondo and Dale Districts of Sidama zone of SNNPR.

South Central Synod/SCS

South Central Synod is situated in Hossana, some 435kms south west of Addis Ababa. The Synod has experience in implementing emergency relief programs. In this Appeal, the SCS will implement the planned operations in Soro and Shashego Districts of Hadiya zone of SNNP Regional State.

Wabe-Batu Synod

This Synod was previously known as South East Area Work until January 2005. The Synod was active in emergency relief and rehabilitation in Bale zone of Oromiya Regional State, and has continued its concern for the needy people in its area of operation. In this Appeal, the Synod will implement in Medawalabu District.

III. DESCRIPTION OF EMERGENCY SITUATION

Background Information

Based on the multi-agency pre-harvest season assessment, led by the DPPC in November 2004, the report received from the Federal government of Ethiopia revealed that good harvests were expected in most of the central and western crop producing regions of the country. Additional rains in early October eased the situation in some cropping areas in eastern Amhara and in the midlands of east Oromiya.

Latest reports have also indicated relatively good pastoral *deyr* rains that have eased previously critical situations in most parts of Somali Region and pastoral lowlands in the Southern Nations, Nationalities and Peoples Region (SNNPR). There is however, growing concern for deteriorating conditions in Afar where July-September rains were very poor and where movements of people has been reported.

It is estimated that approximately 3.8 million people will continue to require emergency food assistance and several millions will be in need of emergency assistance in health and nutrition, water and sanitation, and agriculture in 2005. There is a growing concern that the number of communities requiring emergency food rations will double in the near future.

Despite overall favourable rains and harvest prospects in 2004 and increasing efforts of the Government to achieve food security through various rural development initiatives, Ethiopia has continued to suffer from the aftermath of two drought emergencies in which in the last emergency of 2002/2003 a total of 13.2 million people required humanitarian assistance. In many parts of the country, depletion of assets due to recurrent droughts continued to distress millions of farmers and pastoralists this year. Many were facing substantial challenges of continued vulnerability as a result of minimal health services, inadequate water and sanitation, insufficient agricultural support and destitution.

In late 2004 an effort was made to differentiate between the chronically and acutely food insecure populations. Consequently, two complementary plans have been developed for 2005. The 2005 Humanitarian Appeal is expected to attend to the acute needs of the unpredictable food insecure population while the new food security programme will tackle longer-term food security needs through the PSNP.

Emergency needs in non-food sectors are to be defined with the aim of saving lives and protecting livelihoods threatened by both acute and chronic emergency situations. Those needs are stipulated by each region and *Woreda* and approved by the respective line ministries so as to ensure synergy with on-going programmes.

The 2005 Humanitarian Appeal is a result of joint efforts by the Government of Ethiopia and the humanitarian community led and co-ordinated by the federal DPPC. The 2005 Humanitarian Appeal is based on comprehensive countrywide assessments in food, agriculture, health/nutrition, and water/sanitation emergency needs undertaken. Taking into account the changes in government structures and working modalities, the overarching policy framework on food security and the revised mandate of the DPPC, the 2005 Humanitarian Appeal will focus on life-saving and livelihoods protection activities in four key sectors: Food, Agriculture, Health and Nutrition, Water and Sanitation.

Through the planned Safety Net Program, the number of emergency food aid needy people is estimated to be 5 million people while 2.2 – 3.1million people (January –June figure) will continue to require emergency food assistance. Several million people will be in need of emergency assistance in health and nutrition, water, sanitation and agriculture in 2005.

Out of the 2.2 -3.1 million urgently needy people (this figure is now revised in the Flash Update of the 2005 Humanitarian Appeal for Ethiopia announced on May 4, 2005) in the country, the Ethiopian Evangelical Church Mekane Yesus/EECMY is planning to assist 103,274 needy people found in 13 districts of four regions. There EECMY has been operational in five districts during 2004 and a further eight new districts are included in this proposal as there is acute need.

The newly included districts are: Teltele and Liben districts in Borena Zone of Oromiya, Akobo, Gilo in Gambella Region, Daramalo and Gofazurian districts in Gamo Gofa zone of SNNPR and Soro and Shashego districts and Hadiya zone of SNNPR.

The current situation in the pastoral areas of Somali, lowland Bale and Borena Zones of Oromiya and South Omo in SNNP regions, Afar and Gambella regions is alarming. In cropping areas the erratic rains have severely affected long cycle crops of maize and sorghum in lowland areas, consequently over stretching the coping capacity of the farmers.

The Federal DPPC has predicted humanitarian disaster unless timely and adequate responses are forthcoming. On May 4, 2005 the Federal DPPC launched a Flash Update on the humanitarian Appeal of 2005. According to this update an additional 687,470 people need emergency food aid, raising the number from 3,118,327 estimated in December to 3,807,797. The following table gives the number of emergency food needy people in the various Regions and it gives the additional number of beneficiaries and the amount of food needed in The operational area: National Regional states.

Region	Beneficiaries			Food Requirement in MT		
	December Appeal	Additional May Flash	Total	December Appeal	Additional May Flash	Total
Tigray	391,844	311,078	702,922	66,563	34,670	101,233
Amhara	114,610	0	114,610	15,560	0	15,560
Oromiya	500,004	182,751	682,755	70,041	20,368	90,409
SNNPR	325,997	99,670	426,667	39,016	5,555	44,571
Harari	0	6,605	6,605	0	736	736
Somali	1,240,806	0	1,240,806	137,916	0	137,916
Afar	457,112	87,366	544,478	58,602	4,869	63,471
Diredawa	38,454	0	38,454	4,987	0	4,987
Gambella	49,500	5,502	0	5,502	0	5,502
Total	3,118,327	687,470	3,806,797	398,187	66,198	464,385

As Per the Federal DPPC plan for 2005, relief requirement in 2005 is estimated at 464,385 MT.

IV. DESCRIPTION of the SITUATION in the AREA of PROPOSED RESPONSE

The EECMY- DASSC proposed areas of operation in this Appeal are divided into two main categories; the first one being the areas where the two organisations had their relief operations in 2004 -Medawalabu Woreda from Oromiya, Chifra and Mille Woredas of Afar, Dale and Aletawondo Woredas of SNNP Regions.

The other areas are Teltele and Liben Woredas of Oromiya, Daramalo and Gofazuria Woredas of SNNP, Akobo & Gillo Woredas of Gambella Regions - all new areas for both organisations.

Details of situations by region

OROMIYA REGION

In Oromiya, the Meher season production was expected to be better than last year and in some areas it was reported to be above the five-year average. The weather has been generally favourable, use of farm inputs has increased and cultivated areas have expanded. Nevertheless, this was not so for the already affected Woredas where they experienced poor crops in most lowland areas, mainly in East and West Hararghe, Arsi, Bale and East Shewa zones. For pastoralists in Borena and Guji zones, pasture and water has been short in most areas, and rainfall was poor earlier in the year while the livestock condition has not fully recovered.

BALE ZONE, MADA WALABU DISTRICT

Bale zone is one of the chronic food-deficit areas included in government's 2005 humanitarian assistance plan. Mada Walabu is one of the 18 districts/waredas of Bale zone of Oromiya Regional government. Per DDPB,

2001 the total population of the district is 77, 638 people. The main rainy season in Meda walabu Woreda is between March to May (Genna) and the smaller rainy season is between October and November (Haggaya). As a result of low and erratic rainfall, crop yields are poor and loss of crops and pasture was substantial. Lack of infrastructure, remoteness, rain shortage, disease etc, hampered the rural economy. Depletion of assets has reduced the purchasing power of the community and the death of cattle has caused shortage of oxen for land preparation as well as reduced milk supplies. As in the other Woredas of Bale, the root cause for poor performance, crop, water and livestock conditions is the failure of the rains. This had left many households without food of their own.

The magnitude of the problem had increased over the last five years. As in the previous years, Mada Walabu remains a food insecure area in 2005. Among the neediest local inhabitants who are already in a critical situation, only 2,220 people are considered in the 6-month government plan for emergency food assistance in 2005. This figure is controversial as the situation on the ground is far more serious. At present, the zonal DPPB estimates the number of food needing people to be more than 36,000. Besides the emergency food supply, the community needs short-term rehabilitation inputs and main crop seeds.

BORENA AND GUJI ZONES

Situations in Teltelle and Liben Districts

The Hagaya rains started on time in most parts, but late onset was reported by a number of Peasant Associations/PAs in Teltele Woreda in Borena zone and most parts of Liben Woreda in Guji zone. The rain distribution was erratic, with an interruption between September and October. The 2004 Gena, the most important rain of the year was also poor in most areas. Usually the Gena rains constitute 70-80% of annual rainfall and provide most of the moisture for the regeneration of perennial grass and the replenishment of water points. The poor Gena rains have also meant that the condition of livestock and production (milk and butter) were well below normal. Significant numbers of cattle and calves have died due to the harsh dry spell that followed the poor Gena season.

The contribution of the Hagaya crop to the annual food supply is usually small. This year, both planted areas and expected harvests are well below normal as farmers were discouraged by the erratic start of the rains. The previous Gena crop (mainly maize) has also almost entirely failed in Teltele and Liben Woredas/Districts/. Normally, 70-80% of the annual grain production in these lowland Woredas is obtained from the Gena crop. Consequently, cereals supply in the two zones is very low.

AFAR REGION

Afar region is situated in the north eastern part of Ethiopia in the great east African rift valley. It is divided into five different zones, which are further divided into 29 Woredas/Districts. The regional population is estimated to be 1.2 million, of which 90% are pastoralists and 10% agro-pastoralists. The drought of 2002/03 affected all the 29 Woredas and the ongoing 2004/05 drought affected zones 1, 2 and 5.

This year, the region is again experiencing drought. Normally the Karma (Meher) rainfall occurs from mid or late June to mid September. This year, the onset of the Karma rain was reported to be in mid July, late by about two to four weeks, depending on the area. It stopped raining by the end of August, two weeks earlier than normal. In general, the Karma rains were better this year than the last 3 -4 years both in amount and distribution. Even so, the situation this year is somewhat below normal, and the region has still not recovered from the disasters of the previous year's drought.

Afar Region has been heavily dependent on external aid since 1994 with an increasing number of people requiring food aid. In 2004/05 the needy population has grown to 560,000 (45% of the population).

CHIFRA AND MILLE WOREDAS/DISTRICTS

Chifra and Mille of zone 1 are included in the food deficit areas that require emergency assistance. These two Woredas have also been included in the emergency relief operations of the EECMY/LWF since 2002. In Chifra and Mille the EECMY/LWF Soil and Water Project Conservation Project (SWCP) is currently implementing rehabilitation projects, focusing on small-scale river diversion and irrigation schemes.

In some villages the water points have dried up and pasture is scarce forcing the pastoralists to migrate to the nearby intermediate highland of Amhara and Tigray regions in search of pasture and water. The water levels in the perennial rivers such as Mille are very low and many livestock have died while the rest are physically weak and unable to give birth to calves or produce milk. Large number of livestock have also died due to the combined effect of drought and opportunistic diseases (endemic diseases). Consequently, the price of cattle and other animals dropped dramatically.

SNNP REGION

In Southern Nations, Nationalities, and Peoples' Region/SNNPR/, overall crop production was anticipated to be better than last year but crops are poor in the lowlands of Sidama, Gamu Gofa, Hadiya as well as other zones. The food security situations in areas that have experienced serious moisture stress have been negatively affected. The populations in these areas who are mainly dependent on crop and livestock production have also been negatively affected.

SIDAMA ZONE OF SNNPR

Dale and Aleta Wondo/districts/

These Woredas are in Sidama Zone of SNNPR and are known for their diverse, intensive, and well-established traditional agro-forestry systems in which a diversity of perennial and annual crops are grown together. In both Woredas, mixed agriculture is practised. Major crops grown include enset coffee, maize, wheat, teff, barley, haricot bean, and chat. Enset (False banana) is the staple food while coffee and chat are cash crops. There are two cropping seasons in the areas, Belg and Meher. In spite of over population, small land holdings, and soil erosion farmers used to be self-sufficient and food secure in these Woredas. However, during recent years, rain shortages aggravated their vulnerability and food security situations.

According to the December 2004 Regional assessment team report, the food security situation in the area has deteriorated rapidly. Performance of crop production, particularly in the lowlands, was severely affected by weather adversities such as long dry spells and hailstorms.

Shortage of water and pasture, particularly in the lowlands, as well as increased malnutrition in lowland areas of Alatawondo were also reported. Since April, the price of grain has increased mainly due to the failure of belg crop production. The cumulative effects of the chronic problems in these areas have exposed 4,266 people to emergency assistance. The rehabilitation input will enable households to increase their food production in the subsequent seasons. Distributions of crop seeds and farm tools are expected to contribute to the reduction of the families' vulnerability. Some of these rehabilitation activities are integrated with food distribution. Details can be found in the annex.

HADIYA ZONE /SNNPR

Shashengo and Soro Woredas/Districts

This year's Meher season rains started in the highland and wet midland areas but was delayed by two to four weeks in lowland and dry midland areas of the SNNP Region. The rainfall performance had a mixed pattern in different areas of the region -generally below normal in the lowland, dry in mid highland localities, above normal in some western highland and heavy in wet midland areas.

Thus, the neediest districts of Shashengo (7,056) and Soro (6,300) Districts in Hadiya Zone /SNNPR will be included in this proposal.

GAMO –GOFA ZONE IN SNNPR (Gofa zurria and Daramalo Woredas/Districts)

The main rains from March–May 2004 were very poor adversely affecting the livelihood of both pastoral and agro-pastoral communities. In pastoral areas, the main rain was late by more than one month, while the short rain (August -October) in the agro-pastoral areas did not materialise. The only significant rains received in the zone were the late short rains, which started in October (late for pastoralist and unseasoned rain for agro-pastoralists).

During the 2004 belg assessment in July, some 85,000 people were identified as needing emergency food assistance for the period August - December 2004, while another 50,000 were to be closely monitored. The beneficiary figure was high because of the cumulative effect of consecutive rain failures including the main March - May 2004 rains. As the situation has not improved from the previous emergency status, 95,114 people in south Omo have been identified as requiring emergency food assistance for six months in 2005.

Rehabilitation inputs such as seeds and farm tools are also planned to encourage the farmers to work on their farm plots and produce their own food in the subsequent seasons. Distributions of seeds and farm tools are expected to contribute to the reduction of the families' vulnerability.

GAMBELLA REGÍAN, ANNUAK AND NUER ZONES, GILLO, AND AKOBO DISTRICTS

The December 2003 ethnic conflict has disrupted the normal agricultural activities of the rural population in Annuak zone in Gambella. The violence has caused displacement and forced migration among the inhabitants and resulted in loss of human lives and assets. Besides the conflict situation in Gambella, the failure of crops due to erratic rains in Annuak and Nuer also brought the need for emergency food aid in the Region.

The erratic nature of rains during 2004 agricultural season has negatively affected crop yields, including maize and sorghum production. Total area planted and crop productions were reportedly decreased by 25% and 50% respectively as compared to last year. Therefore, the food security situation of certain parts of the rural population remains precarious.

Note: For further information on the amount and types of farm tools for distribution, please refer to Annex 4. Details on the amount and cost of seeds needed can be found on Annex 3.

V. TARGETED BENEFICIARIES

A total of 103,967 people have been targeted for emergency food distribution for at least six months. The beneficiaries are from among the most vulnerable and needy populations in four Administrative Regions of Ethiopia. Specifically they are from two Woredas of Afar; Chifra and Mille Woredas/Districts /, four Woredas/Districts / of Oromiya, two Woredas/Districts / of Gambella and six Woredas/Districts/ of SNNPR. (The breakdown of emergency beneficiaries and food required by region or zone is shown in Annex 2).

The Federal DPPC and international humanitarian agencies have developed national Food Aid Targeting Guidelines. In each Woreda/district, Disaster Prevention and Preparedness Task Forces are responsible for identifying and registering of the target beneficiaries at PA level. Members of the Task Force are representatives from the Woreda Administration, Ministry of Rural Development and Agriculture, Ministry of Health, Ministry of Education, Early Warning and Disaster Prevention and Preparedness Desk, and NGO representatives in the area. At community level, members of the community Task Force are PA leaders, community representatives, religious leaders, and known community figures. Priority will be given to the most vulnerable groups such as female-headed households and other criteria set by the community Task Forces.

Criteria for the Selection

The district Disaster Prevention and Preparedness Task Force receives the official information from the Zonal administration office or from the Regional DPPC Office on the number of needy people in a particular Woreda. Then the Woreda/District/ Task Force fixes quotas based on the resources available in the Woreda, and requests the PA level Task Forces to screen the neediest of the needy in the PA by setting criteria based on assets and degree of vulnerability. In most cases, the communities Task Force gather the community members and together select the neediest of the needy among them. Then the list of the selected beneficiaries will be sent to the Woreda/District/ DPPC Task Force for appraisal and approval. The list will then be submitted to the implementing organisation for distribution of food.

VI. PROPOSED EMERGENCY ASSISTANCE AND IMPLEMENTATION

Goal : The goal of the intervention is to save lives and contribute to the rebuilding of the affected communities' capacity to regain and build up their livelihood.

Specific Objectives:

- **To prevent deterioration in the nutritional status of target beneficiaries and to prevent famine.** The target groups will have access to food resources made available through this Appeal. This food will prevent malnutrition, especially among vulnerable groups such as children under five, lactating and pregnant women and the elderly.
- **Prevent/stop/abnormal migration of farmers in search of food.** Timely distribution of relief food is expected to prevent abnormal migration. It is also hoped that by meeting the food needs, farmers will stay in their villages and continue their normal productive activities that will reduce vulnerability, including seasonal and chronic food insecurity
- **Stabilise / reduce sale of assets by avoiding distress sale.** Sale of productive assets is one of the coping strategies that farmers or agro-pastoral adopt in times of disaster. Therefore the food distribution programme is expected to minimise further depletion of livestock and other productive assets.
- **Build community capacity through provision of rehabilitation inputs.** Linking relief with food security is one of the implementation modalities of the project. The seeds and farm tools planned to be distributed in these areas of interventions will help rebuild the communities' capacities to increase their food production in the subsequent seasons.
- **Rehabilitate the chronically food insecure families.** The chronically food insecure families will be rehabilitated through provision of seeds and farm tools. Provision of medical support to health posts for human and animal services will lower incidences of disease.

In general, the objectives of the proposed projects fully comply with Federal and Regional food security policy, in particular the three pillars of the national strategy (increase the availability of food through increased domestic production, ensure access to food for food deficit households, strengthen emergency response capabilities).

Activities

The proposal comprises three components:

- Provision of emergency relief food (grain and supplementary food)
- Provision of rehabilitation inputs with the food distribution program.
- Provision of medical support for treatment of humans and livestock.

EMERGENCY RELIEF FOOD (GRAIN, & SUPPLEMENTARY FOOD)

The total number of beneficiaries is **103,967**. The total amount of food required is estimated at **9,362 MT**- food grain and **943 MT** supplementary food. A total of 10,305 MT food will be needed. For details, please refer to Annex 2 & 3

REHABILITATION INPUTS

The rehabilitation components are aimed at improving the capacity of the farmers and communities at large, to enable them to prepare against future food security vulnerabilities. Seeds and farm hand tools will be distributed to the target groups. The average house hold (HH) comprises five persons, therefore 20,797 HHs will benefit from this project. Each HH will receive 15kilos of varieties of seeds, sufficient for half a hectare of land. Accordingly, 317 MT of seeds will be distributed to the 20,797 HHs in the 14 Woredas. Details of numbers of beneficiaries by Woreda are shown in Annex 4.

The DDPC indicated that many areas in the country will have a surplus production in 2005. This surplus will be brought to local markets to cover most of the needs other than food. All food stuffs indicated in this proposal are available on the local market. During the first half of 2005 farmers are required to pay back the loans on various agricultural inputs. Local purchase of food is encouraged by all humanitarian aid actors in order to stabilise the market and help the community.

MEDICAL SUPPORT FOR TREATMENT OF HUMAN & ANIMALS

Medical support is planned in seven Districts out of the 14 indicated in this Appeal. The seven Districts are those that have the most incidences of disease, both in humans and animals. The Districts are Chifra and Mille in Afar, Gilo and Akobo in Gambella, Arero, Liben and Teltele in Oromiya Regional States. A lump sum of Birr 150,000 will be allocated for each District. A total of Birr 1,050,000 is estimated for the purchase of the medical support.

Implementation Strategy

EECMY has a strong presence in almost all areas of the planned intervention which will facilitate a smooth implementation.

It is expected that technical inputs for the rehabilitation component will be provided from the ongoing relief programme staff of the implementing EECMY units. Farm tools and seeds will be purchased through local markets and distributed directly to the most needy.

In areas where relief operations are ongoing, the existing storage facilities will be used to store the items. Similarly, storage facilities will be ready both for the requested relief food items and the rehabilitation requests. This will be done by both the implementing agencies and the local government.

The implementation of this programme will depend on the level of funding. It also requires a careful planning and co-ordination with different stakeholders at local level. This will be done in close co-operation and consultation with community leaders and different government line ministries and the church units.

For each Woreda, a team will be employed who will be responsible for handling of the commodities, distribution of food and selected rehabilitation inputs and keeping the records. One distribution team consists of one team leader, two distributors, one registrar, two guards and one storekeeper (at each store). The distribution teams will be assigned for a period decided by the level of funding.

The emergency food and rehabilitation resources will be purchased centrally by the joint relief committee to be formed from both organisations. The type of food and rehabilitation inputs to be purchased will be according to the preferences of the beneficiaries, as some of them prefer maize while others sorghum or wheat.

The assorted varieties of seed will be selected and purchased locally according to the need in specific Woredas. In most lowland areas, drought resistant seeds will be purchased and distributed. Farm tools will be purchased and distributed to all family heads.

Workshops and training programmes will be conducted in selected Woredas. The focus of the training will be on two levels. The first will be training of field staff on record keeping etc. The second will be training of local officials and beneficiaries. The topics of the training will be determined according to the need and the type of the programmes in specific Woredas. However it may include topics such as, emergency preparedness and response, implementation modalities, animal husbandry especially in those Woredas where restocking programmes are proposed, early warning, on Gender issues, sanitation etc.

Planning Assumptions/Constraints and prioritisation

This Appeal will be implemented successfully if the number of beneficiaries remains the same. However, the current signals on the severity of malnutrition and the increasing number of needy people in each Woreda/District/ all over the emergency declared areas indicate that the number of affected people will increase considerably.

Should funding be insufficient resources will be used in those areas where the need is most acute. Both organisations will also inform the government of Ethiopia to look for other sources of supply to cover the needs.

VII. ADMINISTRATION, FINANCE, MONITORING & REPORTING

Administration

The EECMY DASSC and the local church units are responsible for implementation of the programmes in their respective areas of operation. The respective church units implement the programme and work in close consultation with the local communities and the government line ministries. In each Woreda, there is a Task Force for Disaster Prevention and Preparedness, and this task Force is responsible for beneficiary screening and overseeing the distributions.

The implementing EECMY units are also responsible for recruiting and employment of local staff and making the necessary arrangement to ensure storage availability. They also have the overall responsibility of co-ordinating the programme implementation with local community, line departments, local administration and other NGOs who are working in their respective areas.

The Church units, in their respective areas of operation, have the responsibility of preparing interim narrative and financial as well as final report at the end of the programme. All copies of the narrative reports will be sent to the EECMY central co-ordination office. The EECMY -DASSC will appraise the reports and compile the narrative reports and forward it to ACT Geneva. The financial reports will be compiled and forwarded by DASSC Finance Unit.

The operation in this proposal is for a total of eight months, from July - February 2005. The actual duration of the distribution of relief food and rehabilitation inputs varies between Woredas.

The overall programme co-ordination, with regard to information sharing and reporting, will be the responsibility of the EECMY – DASSC. The Church units, EECMY/NCES, EECMY/Wabe Batu Synod, EECMY/SWS and EECMY/SCES, SES, WGBS, EGBS, and EECMY/SCS will be responsible for the day-to-day implementation for the programmes at the local level.

EECMY DASSC will be responsible for monitoring and reporting of the implementations.

Finance

The EECMY DASSC will handle the procurement and transportation of the relief food and rehabilitation commodities at the central level. The overhead cost for the central office the organisation will be handled separately. The fund for operation cost including relief staff salaries and benefits will be transferred and handled by the units to the implementing EECMY units. Finally, a recognised chartered accountant will audit the financial documents and system of the operations and the report will be sent to ACT Coordinating Office in Geneva and other concerned bodies.

Monitoring

Monitoring of the programme will be done by three agencies. The EECMY- DASSC will monitor the operations. The implementing church units' DASSC will conduct a regular monitoring of the programme implementation. The implementing church units' relief distribution team leaders who will work at Woreda and peasant association level will do monitoring of the regular day to day implementation. They are also responsible for the day to day implementation of the programme in close consultation and co-operation with the community and Woreda Task Force.

When the project is finalised, each implementing church unit will prepare both narrative and final financial reports and submit to EECMY central DASSC to be consolidated and submitted to ACT International.

Reporting Schedule:

- **Final narrative and financial reports due at ACT CO by 30 June 2006 - within two months of end of project.**
- **Audit report to be received by ACT CO no later than the 31 July 2006 i.e. within three months of end of project.**

VIII. IMPLEMENTATION TIMETABLE

Implementation schedule

The overall project implementation on the ground is estimated to take eight months, and is expected to start as of September 2005, depending on the availability of funds for the Appeal. The distribution of the rehabilitation inputs will be carried out simultaneously along with the distribution of food, which will continue up to the end of April 2006. The food budget is for six months (September- February) but the salary and rent is for eight months (September to April). It is designed this way to give provision for preparation and consolidation of food distribution, and to match supply of rehabilitation with agricultural season as well as compiling reports.

The detail implementation table will be reviewed when funding is made available and if situation changes, improves or deteriorate.

Implementation schedule is as follows

Month	Description of activities	Means	Financing
Sept-Feb	<ul style="list-style-type: none"> When information about the approval of the project fund is received, the church units will be alerted to organise the necessary facilities like storage and prepare the necessary staff for implementations of the program. Transfer of Fund from Geneva Purchasing and transportation of relief food; preparation of distribution plans; preparation of PSNP plans, including identifying source of rehabilitation inputs, procurement and transportation of technical input (tools, seeds, etc) 	<p>Telephone and fax</p> <p>Bank for the food grain and other inputs from, ACT. Distribution teams in place. Technical experts for planning.</p>	<p>The EECMY can advance the amount of money needed for this.</p> <p>ACT ACT donation for the purchase of food aid for those operation areas not supported by USAID for running of operation including funds for additional Inputs (tools etc.) and workshops.</p>
Sept-Feb	<ul style="list-style-type: none"> Distribution of food Transportation of rehabilitation input (tools and seeds, etc); Monitoring of activities. 	<p>Transport Companies Distribution teams in place. Rehabilitation inputs and technical experts.</p>	<p>Fund through ACT network</p>
April	<ul style="list-style-type: none"> Distribution of grain; food and rehabilitation inputs (seeds, & tools etc.).continue 	<p>Distribution</p>	<p>Fund through ACT network</p>
April	<ul style="list-style-type: none"> Distribution of Grain food continues Monitoring of activities Preparation and submission of interim report to ACT. Distribution of Grain food continues Monitoring of activities Closing of the operations 	<p>Distribution Team</p> <p>Vehicles for monitoring</p> <p>Distribution Team Vehicles for</p>	<p>Fund through ACT network</p> <p>Fund through ACT network</p>

	<ul style="list-style-type: none"> Evaluation of the impact and result 	monitoring	
April	<ul style="list-style-type: none"> Preparation and submission of final narrative and financial reports 		

IX. CO-ORDINATION

All relief, rehabilitation, and development projects in Ethiopia are co-ordinated by the Federal Disaster Prevention and Preparedness Commission of Ethiopia (FDPPC). All the areas in which this Appeal is planned are in the list of the DPPC Appeal.

The EECMY- DASSC will co-ordinate the implementation of relief and rehabilitation resources. Once the funding level is known, EECMY DASSC will contact the regional and FDPPC and submit operational plans for each intended Woreda.

At zonal and district level, the EECMY Church Units (Synods) with related local bodies will co-ordinate the activities, with the zonal and Woreda authorities who will be involved in the planning and implementation of proposed activities. The presence of the EECMY structure at the local level will ensure the full participation of community leaders and line departments.

X. BUDGET

ESTIMATED EXPENDITURE

EVANGELICAL CHURCH MEKANE YESUS (EECMY -DASSC)

<u>Description</u>	<u>Type of Unit</u>	<u>No of Units</u>	<u>Unit Cost ETB</u>	<u>Budget ETB</u>	<u>Budget US\$</u>
DIRECT ASSISTANCE					
Food items					
Cereals	MT	9,475	2,500	23,687,500	2,754,360
Supplementary food/Famix	MT	954	4,500	4,293,000	499,186
Transportation	MT	10,429	700	7,300,300	848,872
Loading/unloading	MT	10,429	40	417,160	48,507
Sub Total				35,697,960	4,150,926
Non food Items					
Seeds	MT	421	4,000	1,684,000	195,814
Hand tools	Set	20,797	75	1,559,775	181,369
Purchase of essential medicines for human	Lump	1	351,000	351,000	40,814
Purchase of essential medicines for animals	Lump	1	234,000	234,000	27,209
Loading/unloading		500	40	20,000	2,326
Transport of materials		500	700	350,000	40,698
Sacks for packing	PCS	5,000	2	10,000	1,163
Sub Total				4,208,775	489,392
Capacity building					
Staff workshops		3	30,000	90,000	10,465
HIV/AIDS PC Workshops	WS	3	10,000	30,000	3,488
Sub Total				120,000	13,953

Evaluation and feasibility study

Monitoring and evaluation of CUs performances	lump	1	30,000	30,000	3,488
Feasibility study on Nutritional status of beneficiaries	lump	1	6,000	6,000	698
Support to recommendation from feasibility study	lump	1	10,000	10,000	1,163
Sub Total				46,000	5,349

TOTAL DIRECT ASSISTANCE **40,072,735** **4,659,620**

ETHIOPIAN EVANGELICAL CHURCH MEKANE YESUS (EECMY) -ADISS ABABA HQ

<u>Description</u>	<u>Type of Unit</u>	<u>No of Units</u>	<u>Unit Cost ETB</u>	<u>Budget ETB</u>	<u>Budget US\$</u>
Personnel, administration, operations and support					
Staff Salaries and Support					
Director,s salary (20 %)	Month	8	1,100	8,800	1,023
Finance coord. (20%)	Month	8	840	6,720	781
Accountant(50 %)	Month	8	700	5,600	651
Coordinator	Month	8	4,500	36,000	4,186
Assistant coordinator	Month	8	4,000	32,000	3,721
Field officers/2/	Month	8	5,200	41,600	4,837
Secretary	Month	8	1,900	15,200	1,767
Store keeper	Month	8	900	7,200	837
Truck driver	Month	8	1,300	10,400	1,209
Sub Total				163,520	19,014
Office Operations					
Communications (e-mail, telephone and postage)	Month	8	1,200	9,600	1,116
Office supplies	Month	8	1,000	8,000	930
Internal Milage for 2 cars 2400 km per month	5 birr/km	8	4,800	38,400	4,465
Hotel and perdiem for 15 days per month	Month	8	5,000	40,000	4,651
Training Workshop for EECMY Relief / Rehab. staff		1	30,000	30,000	3,488
Sub Total				126,000	14,651
TOTAL EECMY ADDIS ABABA HQ				289,520	<u>33,665</u>

ETHIOPIAN EVANGELICAL CHURCH MEKANE YESUS (EECMY) - SYNOD LEVEL**Personnel, administration, operations and support**

Staff Salaries and Support					
Relief coordinators (8 persons)	Month	8	16,000	128,000	14,884
Accountant	Month	8	8,000	64,000	7,442
Sub total				192,000	22,326
Distribution centres staff costs					
Team leader(14)	Month	8	14,000	112,000	13,023
Registrar (14)	Month	8	11,200	89,600	10,419
Storekeeper(14)	Month	8	11,200	89,600	10,419
Distributor (28)	Month	8	22,400	179,200	20,837
Guards (42)	Month	8	14,700	117,600	13,674
Rental-4 cars fr. synods (2000Km/mth x5 Birr p Km)	Month	8	40,000	320,000	37,209
Field expenses	Month	8	58,333	466,664	54,263
Sub total				1,374,664	159,845

Office Operation					
Communications, stationary and utilities	Month	8	10,000	80,000	9,302
Maintenance of rub halls & distribution center stores	Lump	1	14,000	14,000	1,628
Rental of stores (12)of Stores	Store	12	3,000	36,000	4,186
Sub total				130,000	15,116
TOTAL EECMY SYNOD				1,696,664	<u>197,287</u>
TOTAL EXPENDITURE EECMY- DASSC				42,058,919	<u>4,890,572</u>

1 USD = ETB 8.6

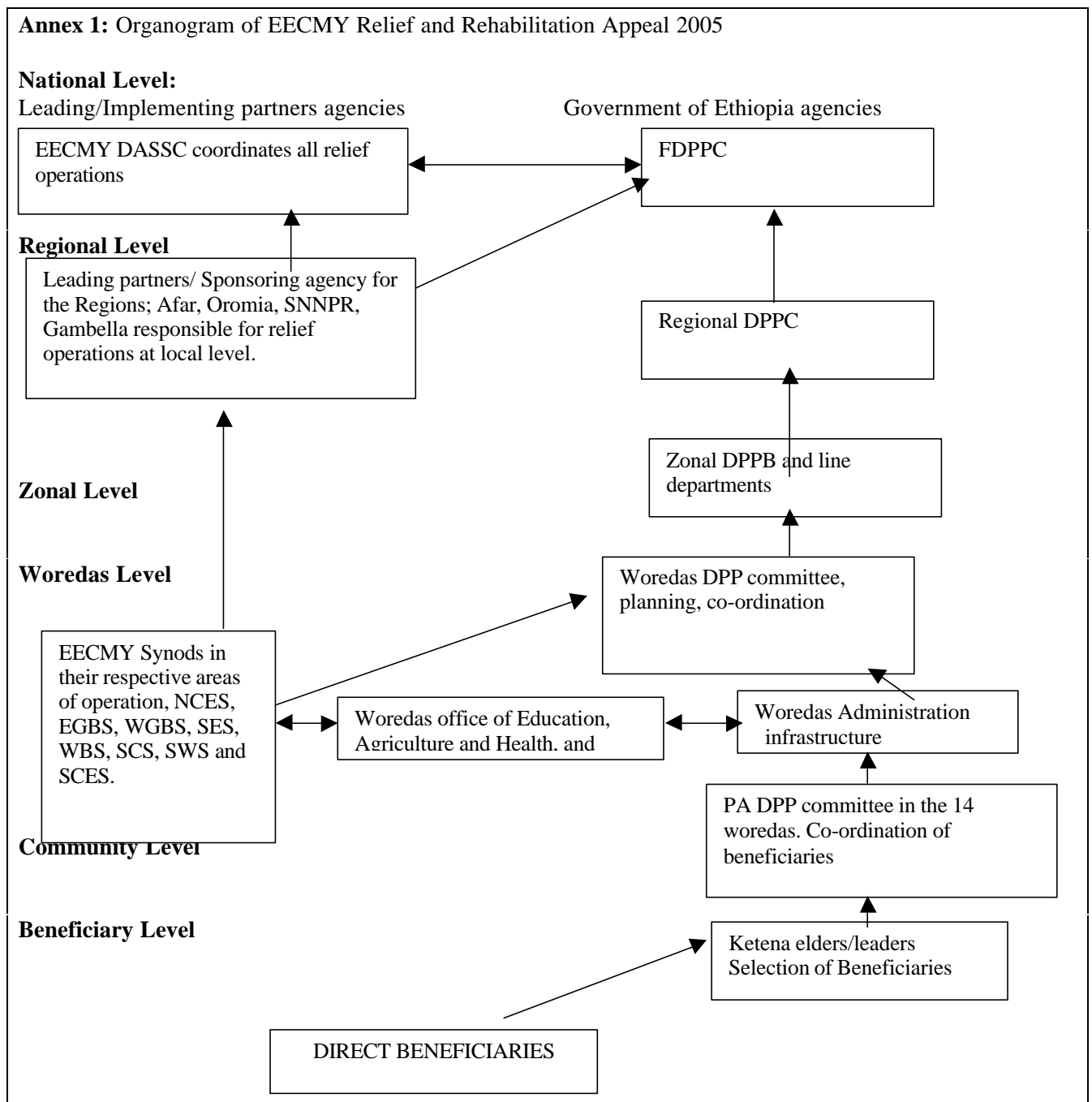
EVALUATION

Co-ordination / Communications

There are two types of forums currently operating on relief activities in Ethiopia. These include the ACT forum and the Joint Relief Partnership (JRP) forum. Members of the JRP forum include: - EOC-DICAC, EECMY, LWF, Ethiopian Catholic Church Secretariat and the Catholic Relief Services (CRS). EOC-DICAC, EECMY & LWF are members of ACT along with NCA, DCA, Christian Aid, EED and Bread for the world.

Based on a series of discussions among members of ACT in Ethiopia, they have decided to look at ways of strengthening their co-ordination through the ACT Fora in an effort of working together as a relief arm of ecumenical partners within Ethiopia. ACT Members would like to commission a study to be undertaken by an outside consultant with ecumenical background. Members of ACT in Ethiopia would draw up terms of reference (TOR) for the consultant. A request for **6,000 USD** to help us undertake this study. A remaining **USD 4,000** would cover costs related to field visits for both the Communications and support staff to the program during implementation of the appeal.

Annex 1: Organogram of EECMY Relief and Rehabilitation Appeal 2005



Annex 2. Emergency Beneficiaries and food requirement by region, zone and wreda.2005

SN	Region	Zone	Woreda	Emergency Beneficiaries	Cereals	Sup. Food	Total
1	Afar	Zone-1	Chifra	20,120	1,811	181	1992
2	Afar	Zone-1	Mile	16,445	1,481	148	1629
3	Oromiya	Bale	Madawalabu	2,220	200	20	220
4	Oromiya	Borena	Arero	693	63	7	70
5	Oromiya	Borena	Teltele	2,728	246	25	271
6	Oromiya	Guji	Liben	9,472	853	86	939
7	Gambela	Nuer	Akobo	11,000	990	100	1090
8	Gambella	Annuak	Gillo	10,500	945	95	1040
9	SNNPR	Sidama	Aletawando	1,941	175	18	193
10	SNNPR	Sidama	Dale	2,325	210	22	232
11	SNNPR	G.Gofa	Daramalo	3,465	312	32	344
12	SNNPR	G.Gofa	Gofazuria	10,962	987	99	1086
13	SNNPR	Hadiya	Soro	6,300	454	46	500
14	SNNPR	Hadiya	Shashego	7,056	635	64	699
		Total		105,227	9,362	943	10,305

Note:

The food supply is estimated for six months' duration on 15kg/person/month of cereal, 1.5kg/person/month of Supplementary food.

Note: 1USD = 8.6 Birr, 1MT Cereal ETB = 2500

Annex 3 Amount and cost of seeds needed

SN	Operation areas	No of Benefit Family heads	Total Amount of seeds/MT	Cost per MT	Total cost	
					Eth. Birr	USD
1	Chifra	4,024	80	4,000	320,000	37,209
2	Mile	3,289	66	"	264,000	30,698
3	Madawalabu	444	9	"	36,000	4,186
4	Arero	139	3	"	12,000	1,395
5	Teltelle	546	11	"	44,000	5,116
6	Liben	1,895	38	"	152,000	17,644
7	Akobo	2,200	44	"	176,000	20,465
8	Gilo	2,100	42	"	168,000	19,535
9	Aletawando	389	8	"	32,000	3,720
10	Dale	465	9	"	36,000	4,186
11	Daramalo	693	14	"	56,000	6,511
12	Gofazuria	2,193	44	"	176,000	20,465
13	Soro	1,260	25	"	100,000	11,628
14	Shashego	1,412	28	"	112,000	13,023
	Total	20,797	421	4000	1,684,000	195,813

Note: Current Local prices of seeds per MT is estimated to be Birr 4,000/MT, Estimated costs (Exchange rate 1 USD =8.6Eth. Birr)

Annex 4 Amount and types of farm tools for distribution

SN	Operation areas	No of Benef. Family heads	Total cost For the 3 pcs	Total cost ETB	USD
1	Chifra	4,024	75	301,800	
2	Mile	3,289	75	246,675	
3	Madawalabu	440	75	33,000	
4	Arero	139	75	10,425	
5	Teltele	546	75	40,950	
6	Liben	1,895	75	142,125	
7	Akobo	2,200	75	165,000	
8	Gilo	2,100	75	157,500	
9	Aletawando	389	75	29,175	
10	Dale	465	75	34,875	
11	Daramalo	693	75	351,975	
12	Gofazuria	2,193	75	164,475	
13	Soro	1,008	75	75,600	
14	Shashego	1,412	75	105,900	
	Total	20,797		1,859,475	204,945

Note: Current price of farm hand tools (Unit cost for each set of three types) is Birr 75/set